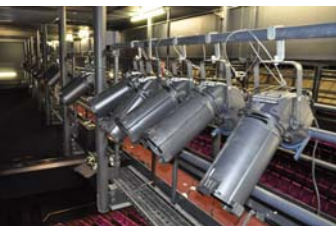


Company Profile—资源



Stagecraft is a private company owned and managed by its founder Rory Miller.

Stagecraft is an entertainment equipment supply company, engaged in the manufacture, hire, sales, distribution and installation of stage machinery, drapes, lighting grids, stage lighting, orchestra lifts, portable staging, sound and audio-visual equipment.

Stage Machinery: For over thirty years Stagecraft has built up a significant reputation for designing, manufacturing and installing automated and manually operated winches, counterweight flying systems, heavy duty drapes and track systems. The market for Stagecraft's products and expertise extends nationally and throughout much of Asia. Stagecraft has established clientele in Singapore, Malaysia, China, Brunei, Hong Kong, Thailand, Pakistan, India and Indonesia.

Stagecraft operates from its new, purposed built facility in Malaga, Perth Western Australia. This 1925m² floor area facility houses administration offices, design office, showroom, hire department, and fabrication, electronics and paint workshops all under one roof. Additionally its large loading bay has the capacity for two semi-trailers and is serviced by a fork-lift.

Stage Lighting AV & Audio: Stagecraft is a distributor for many international electronic /digital entertainment equipment manufacturers and has an expanding market in cinemas, theatres, education, clubs, concert and convention venues, places of worship and television studios.

Stagecraft has a growing involvement in a consultancy/designer capacity by clients and/or their architects to assist in venue and fit-out design from concept to completion

Resources—资源

PREMESIS

Stagecraft's new purpose built factory commenced operation in August 2008. With over 800m² of floor area dedicated to fabrication, plus a large loading bay, paint-shop and material storage areas, this facility is capable of a high through-put of custom built theatre machinery. To compliment this capability Stagecraft's design division employs the latest engineering design software to develop and refine its products.



PERSONNEL

Key Personnel

General Manager: Rory Miller

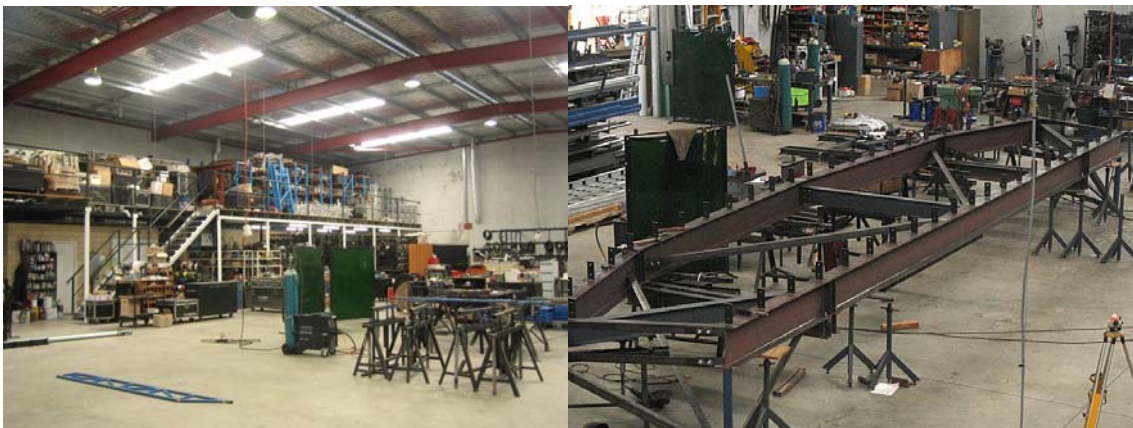
Rory's career spans 40 years in performing arts presentation and equipment design, manufacture and supply. Rory has supervised many significant off-shore installations of theatre equipment

Design draftsman: Ken Rayner

Ken has spent forty years in performing arts as a designer, technician and production manager. He has a Master of Creative Arts (Theatre) degree from Wollongong University NSW.

Manufacturing Personnel

Stagecraft has a number of key long-term employees across a range of trades from welding to electronics who between them have accrued a wealth of expertise in this specialized field.



Projects—及物动词

Selected completed and current projects demonstrating Stagecraft's experience and expertise:

- St Hilda's Anglican School for Girls
- John Paul College, Kalgoorlie
- Perth Arena
- Kamaroi Steiner School—Sydney
- Woodvale Baptist Church
- Hamer Hall—Victorian Arts Centre Melbourne
- Khalsa Heritage Centre—India
- Albany Entertainment Centre
- Genting Highland Resort Casino—Malaysia
- Indoor Sport Stadium—Brunei
- Tamaseel Theatre—Lahore Pakistan
- Perth Convention and Exhibition Centre
- Adelaide Entertainment Centre
- Australian Broadcasting Corporation television studios—
 - ◇ Sydney
 - ◇ Melbourne
 - ◇ Perth
- Foxtel—Television Studio Sydney
- Fox Sports Television Studio Sydney
- Channel 7 Television Studio Sydney

Stagecraft's contribution to these projects ranges in value up to \$AUD 2,500,000 and includes:

- | | |
|--|--|
| • Counterweight rigging systems | • Theatre Communication Systems |
| • Electric hoist rigging systems | • Design Advice/ Consultancy |
| • Curtains, curtain tracks and accessories | • Custom designed rigging systems |
| • Complete Stage Lighting Systems | • Forestage / orchestra pit lifts |
| • Complete Stage Audio Systems | • Stagecraft Air-Cushion flooring systems |