

stagecraft
Pty Ltd

**ENTERTAINMENT
ENGINEERING**

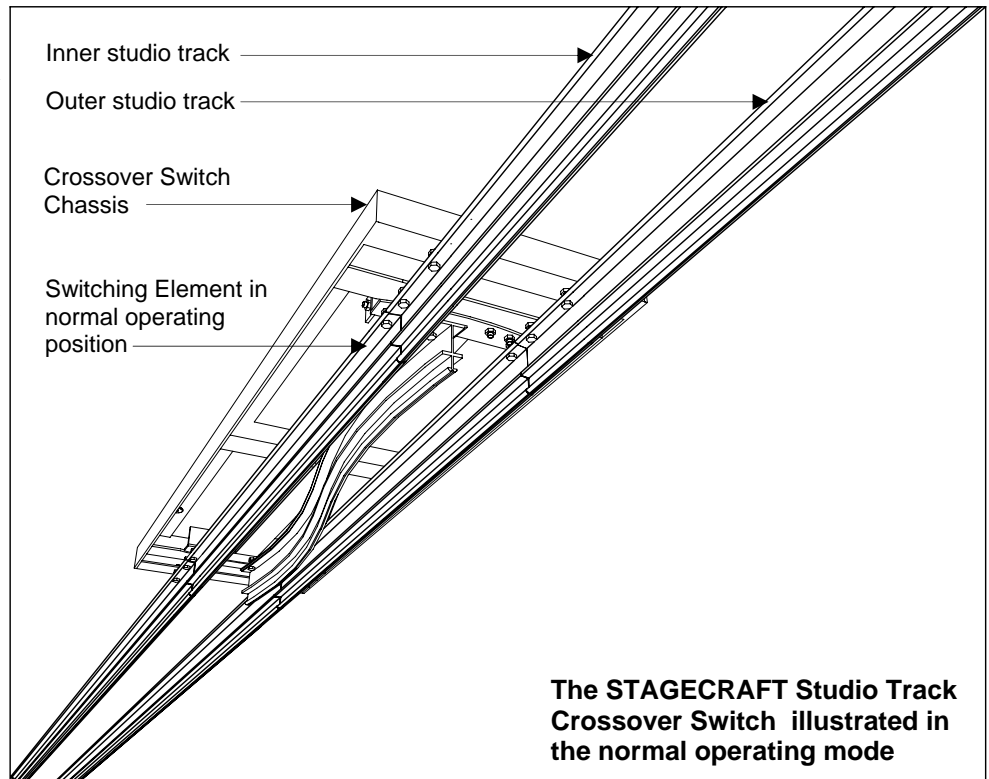
STUDIO TRACK CROSSOVER SWITCH

PRODUCT INFORMATION SHEET

DESCRIPTION

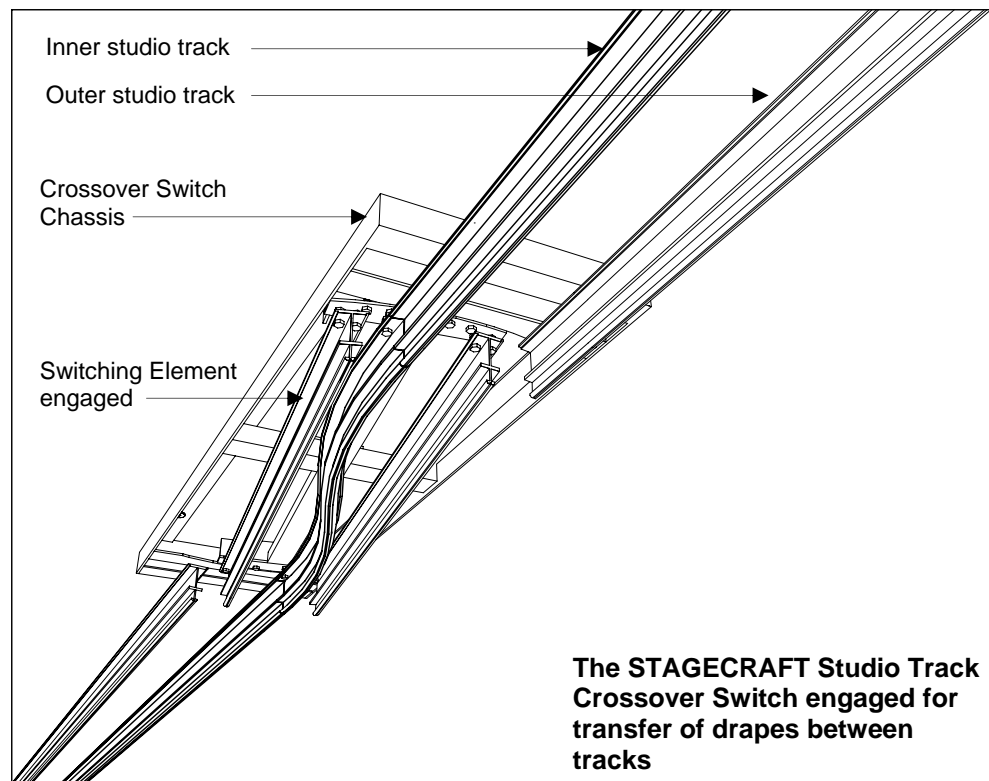
The STAGECRAFT Studio Track Crossover Switch provides a simple to operate device to transfer studio drapes between a parallel pair of tracks set at 200 mm apart.

The Crossover Switch is fully compatible with the STAGECRAFT Studio Track System and is designed to be used in conjunction with the STAGECRAFT Studio Track Junction Switch where an additional storage track is installed.



FEATURES

- Low profile silhouette requiring minimal space
- Highly accurate and lockable track alignment adjustment
- Positive and precise operation
- Direct manual operation standard — optional remote electric servo operation available.
- Optional automatic blanking of open ended tracks available to avoid inadvertent de-tracking of drapes
- May be retrofitted to existing STAGECRAFT Studio Track installation



SC/IKR 019 -04/06

STAGECRAFT PTY LTD, ABN 11 009 040 144
2 / 41 KING EDWARD ROAD, OSBORNE PARK, WESTERN AUSTRALIA 6017
PHONE +61 8 9445 9600 FAX +61 8 9445 9700
www.stagecraft.com.au

All specifications may be changed without prior notice. While due diligence is used in compiling the data herein, Stagecraft Pty Ltd does not accept liability for losses ensuing from any errors or omissions.