

**PRODUCT SHEET**

STAGECRAFT'S Capstan Drive Curtain Motor is a compact and easily installed solution to meet on-batten motorised operation for large drapes.

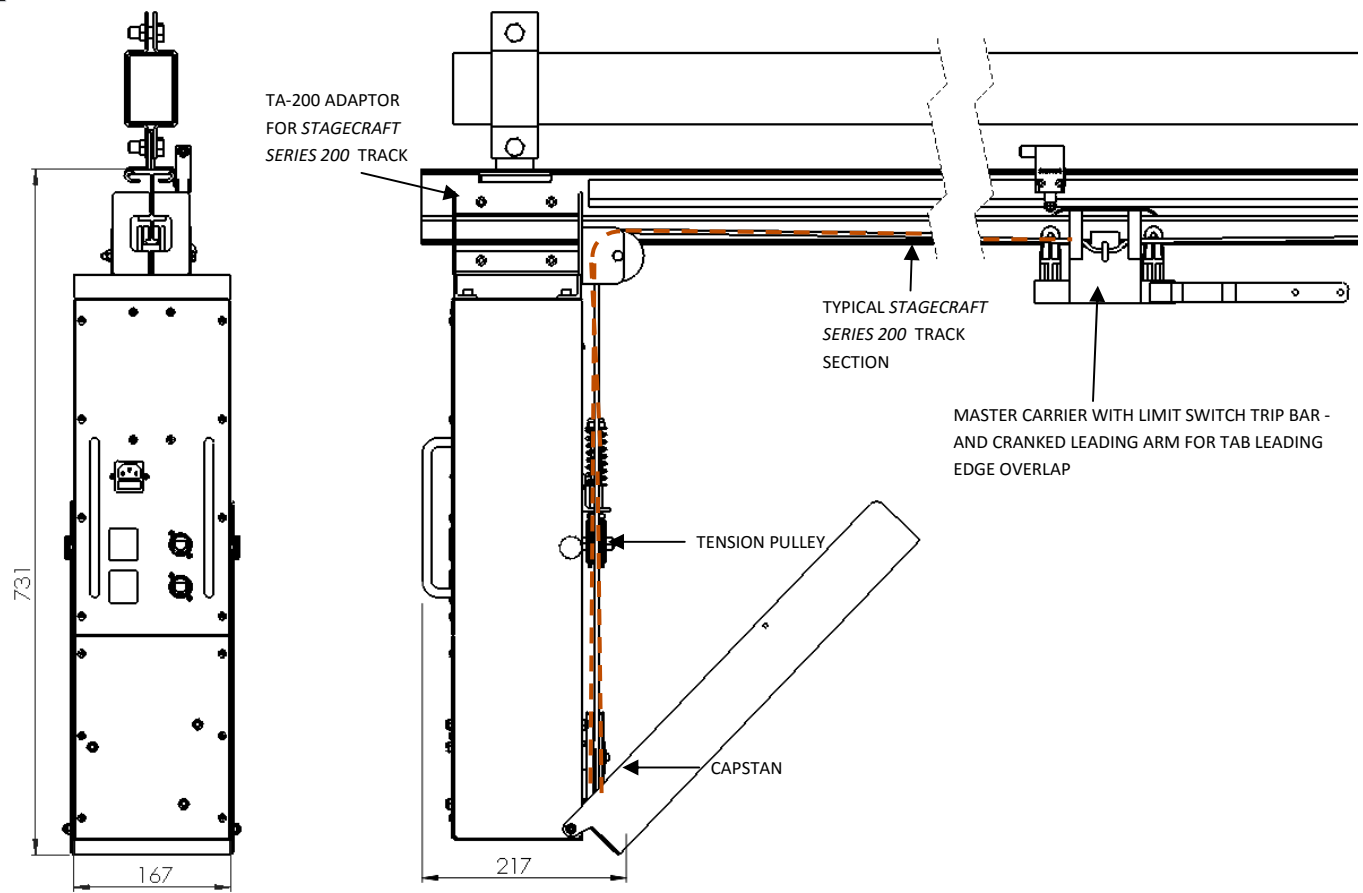
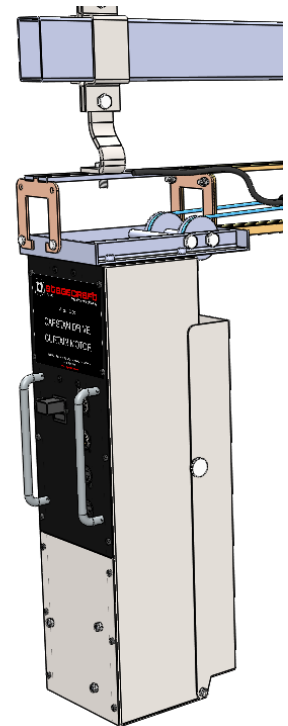
**Model 1500/b** is the basic model featuring:

A manual, wired control panel with controls for : Open—Close—Stop and Speed .

An optional secondary control panel for installations requiring control from a second location.

Attaches directly to STAGECRAFT Series 100 or Series 200 track using track adaptors: TA-100 or TA-200

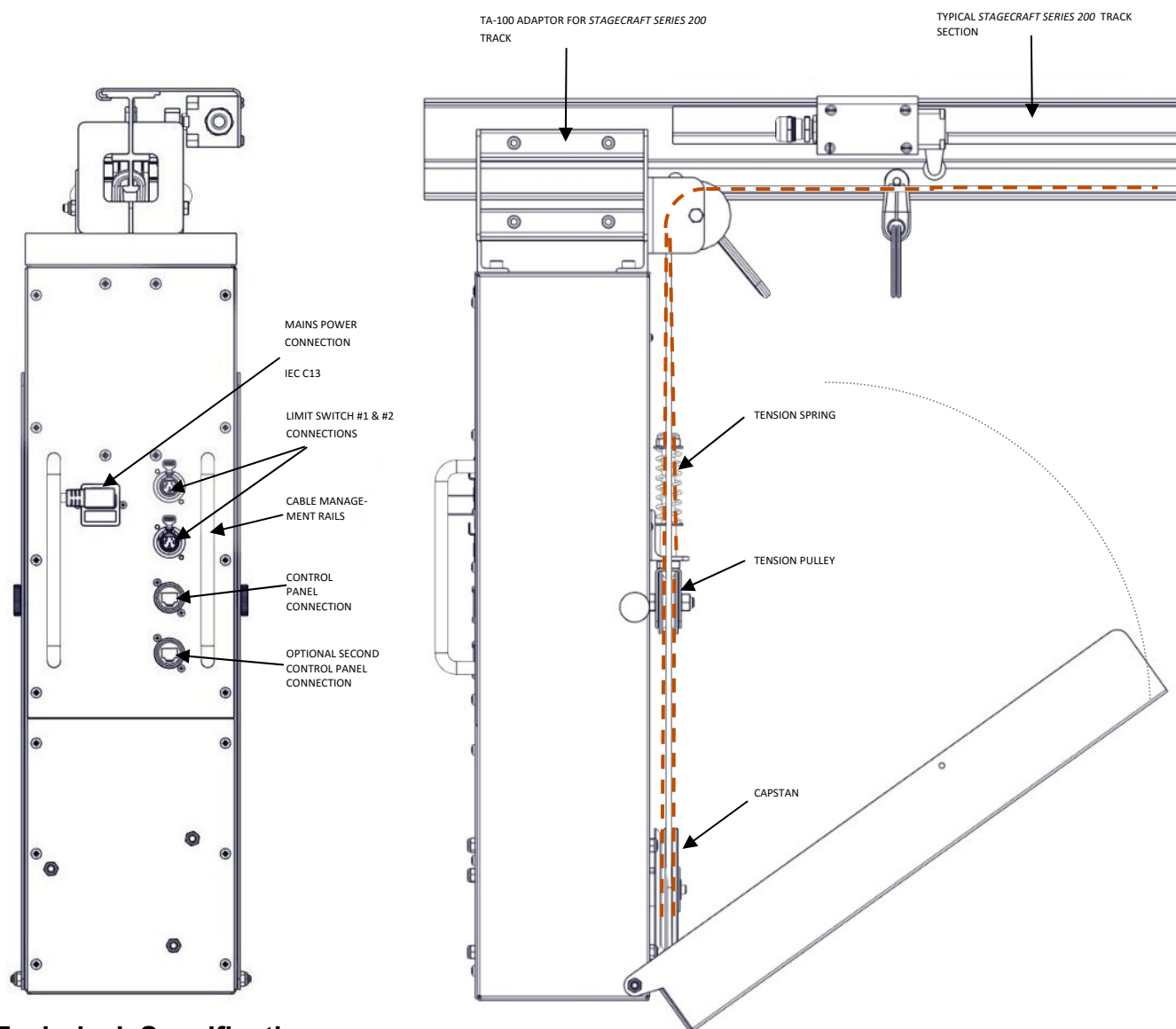
The STAGECRAFT CAPSTAN DRIVE CURTAIN MOTOR suit all theatre curtain installation types, Including: flown and fixed batten, and ceiling or wall mounted track.



# CAPSTAN DRIVE CURTAIN MOTOR

## Model: 1500/b

WITH ADAPTOR FOR *STAGECRAFT 100 SERIES* THEATRE  
TRACK MOUNTING



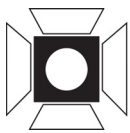
## Technical Specification

Motor: 24v DC, 200w, 3200RPM

Power Consumption: 200-240V 5A

Gearbox: 25:1 ratio worm drive; 128RPM output 30nm torque

Capstan: 95mm dia; root circumference 298.5mm



## PRODUCT SHEET

### ARCHITECTURAL SPECIFICATION

The capstan drive curtain motor shall be capable of drawing two 10metre wide by 8metre drop drapes made from 100% gathered 500GSM fabric in a bi-parting configuration.

The motor shall have multi speed operation with soft stop and start. The motor shall have two limit switches to constrain the travel of the curtain within the designed operation range.

The capstan drive curtain motor shall utilize 4mm Dyneema® synthetic fibre cord.

The capstan drive curtain motor shall be a Stagecraft Model 1500/B Capstan Drive Curtain Motor.

### ACCESSORIES

#### CONTROL PANEL

Each Capstan Motor is supplied with one press button control panel incorporating: power switch ; Open, Close and Stop Buttons; and a speed control knob. The panel is supplied with steel case options for either a surface mount or recessed installation.

The Motors can be supplied with an additional secondary control panel to provide operation from an alternative location. The secondary Control Panels are identical as the primary except for the deletion of the speed control knob.

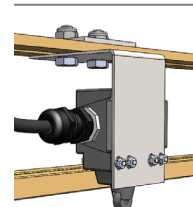
PRIMARY  
CONTROL  
PANEL



#### LIMIT SWITCH

Each Capstan Motor is supplied with two limit switches and adaptor brackets the type of bracket and tripping device will be appropriate for the type of curtain track to be used.

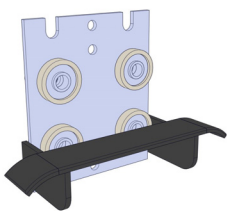
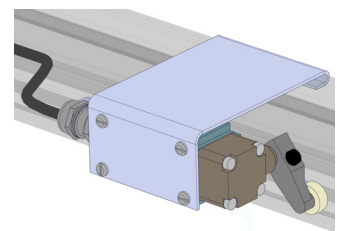
LIMIT SWITCH AND BRACKET  
FOR THE STAGECRAFT TYPE 100  
THEATRE TRACK



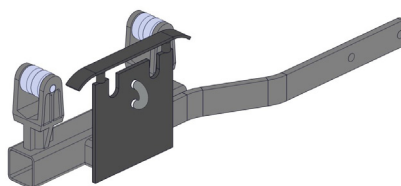
#### MASTER CARRIER WITH LIMIT SWITCH TRIP SHOE

Curtain Track Master Carriers adapted for tripping the limit switches are available for Type 100 and Type 200 track configurations.

LIMIT SWITCH AND BRACKET FOR THE  
STAGECRAFT TYPE  
200 STUDIO TRACK



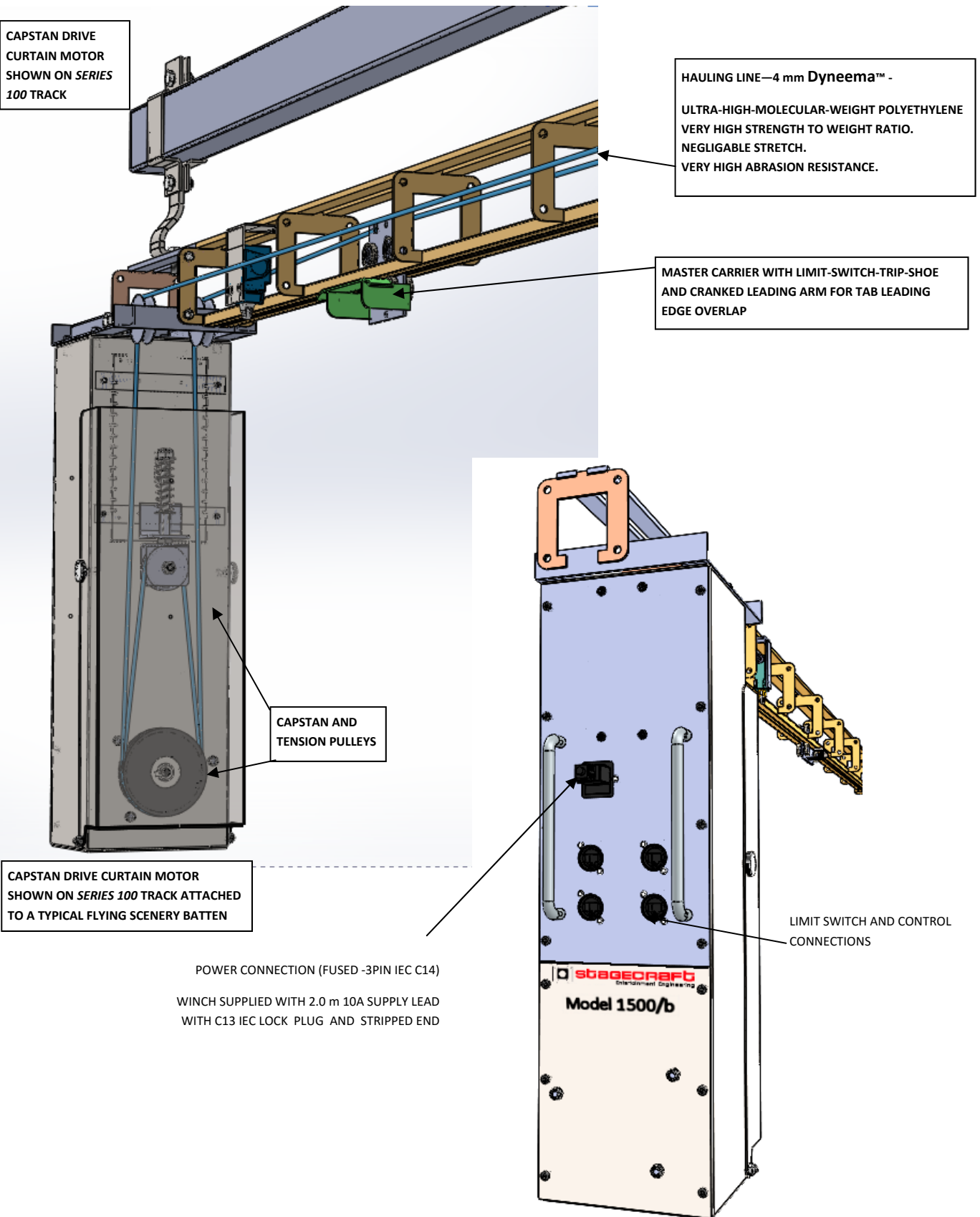
TYE 100 TRIP SHOE MASTER CARRIER



TYE 200 TRIP SHOE MASTER CARRIER

# CAPSTAN DRIVE CURTAIN MOTOR

**Model: 1500/b**



# CAPSTAN DRIVE CURTAIN MOTOR

**Model: 1500/b**

## CAPSTAN DRIVE CURTAIN MOTOR WIRING SCHEMATIC

